
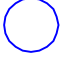




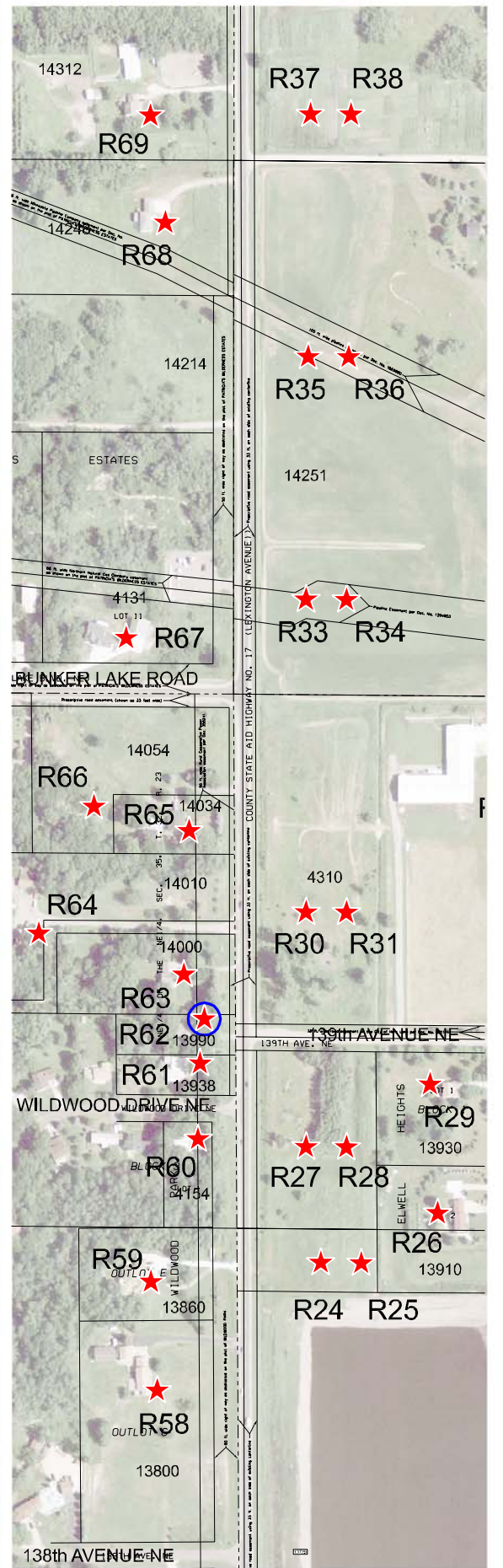
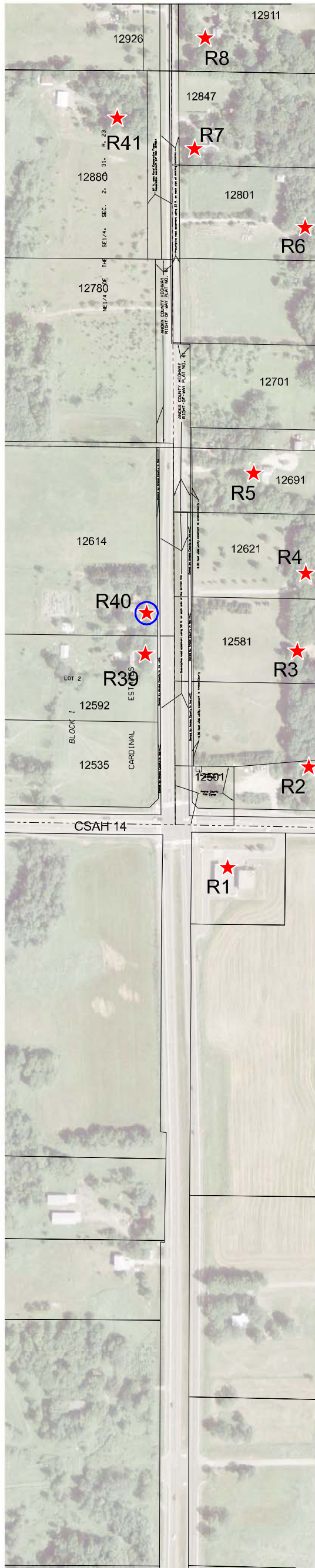
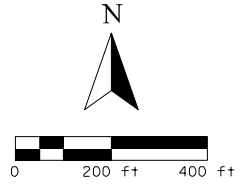


MATCH LINE "A"

MATCH LINE "B"

LEGEND

-  Receptor Locations
-  Monitoring Locations
- xxxx House No. (Address)
-  Locations approach or Exceed Federal NAC
-  Noise Barriers NOT Feasible due to Intersection Sight Distance
-  Noise Barriers NOT Feasible due to Location of Driveway with respect to the House
-  Noise Barriers Potentially Feasible, Further Analysis to Determine Reasonableness



MATCH LINE "A"

MATCH LINE "B"



County Highway 17 (Lexington Avenue)

Transportation Improvement Study

from 125 th Avenue to Bunker Lake Boulevard
Blaine and Ham Lake, Minnesota

Noise Receptor Locations